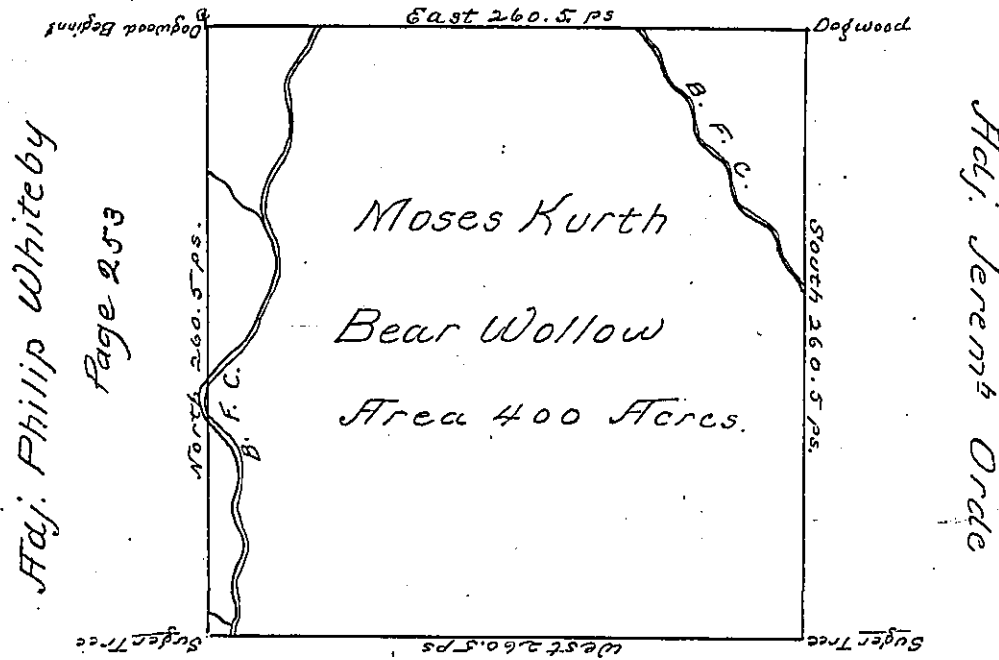


Aaron Williams



Adj. Philip Whiteby

Page 253

Adj. Jeremy Orde

Page 256

Adj. John Hayns

The Above is a Draught of a Survey made the 11th Day Feb^r 1785 in pursuance of a warrant Granted to Moses Kurth Dated the 25 Day of Octo. 1784 Situate on the Branch of Fish Creek called Bear Wallow in Washington County containing four hundred acres with real allowances of 6 ps. bent for Roads

To John Lukens Esq. Sur. Genl.
Jno. Hoge W.S.

IN TESTIMONY that the above is a copy of the original remaining on file in the Department of Internal Affairs of Pennsylvania, made conformably to an Act of Assembly approved the 16th day of February, 1833, I have hereunto set my Hand and caused the Seal of said Department to be affixed at Harrisburg, this second day of July 1901

James W. Latta
Secretary of Internal Affairs.